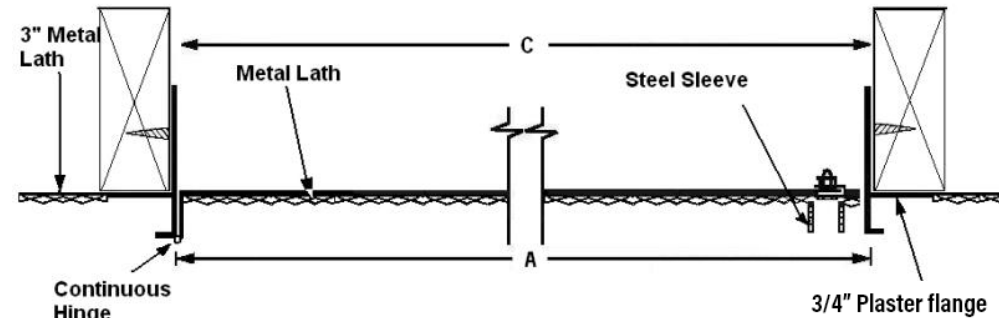


WALLBOARD OR PLASTER INSTALLATION

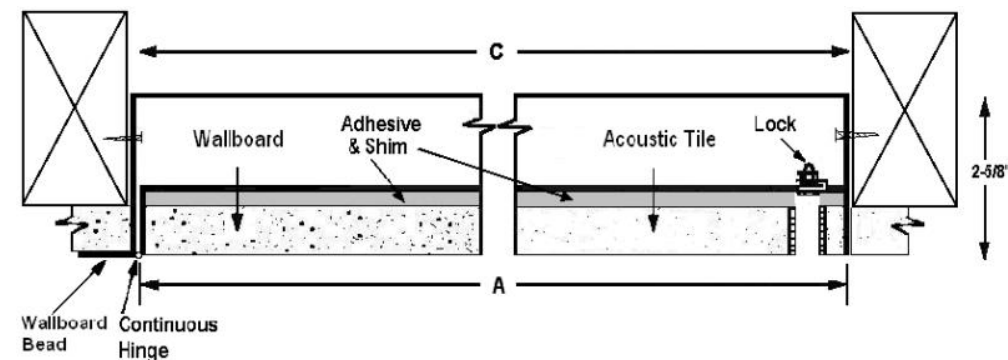
1. With metal or wood studding, install a framed opening at specified location. Open dimensions should be 1/4" larger than door size of panel; i.e., for a 12" x 12" panel, opening dimensions should be 12-1/4" x 12-1/4".
2. Frame above and below access panel. On panels larger than 16" x 16", install a double stud on both sides in the same manner as at passage panels.
3. Place panel in position in opening and mark location of attachments on studding using holes in sides of panel frame as marking guide.
4. Remove panel and drill 5/32" holes through studs at marked points.
5. Place panel in position and attach with #10 sheet metal or machine screws.
6. **CTE:** Apply layers of plaster over metal lath and plaster flange on both wings and recessed door, keeping opening for latch clear. After smoothing plaster, only a slit around the 3 door edges and painted hinge will show.
CT & CTW: apply taping compound to wallboard bead of CTW, or acoustic tile to outside edge of frame. Cut insert piece with cutout for latch. Using shims and appropriate adhesive, make insert level with the top edge of the frame.
7. Check panel for freedom of movement. If it binds, shim as necessary to remove any racking of frame at attachments to studding.

CTE - Recessed Panel for Plaster Wall or Ceiling



CTW - Recessed Panel for Gypsum Wallboard or Ceiling

CT - Recessed Panel for Acoustic Tile Insert



Tools by others

Torx (C2)	T-25
Spanner (C3)	#10 Spanner
Hex Head (C4)	4mm Allen



9702 Newton Ave S. Bloomington, MN 55431 | Many Locations Nationwide

800-554-6077 952-835-2218 sales@activarcpg.com www.activarcpg.com

Due to the wide variety of wall assemblies, these drawings are representative of a typical installation scenario, but are not meant to be a guideline for wall construction. Please consult your local AHJ for current wall construction codes.

NOTE - This is not a Fire-Rated Access Panel - See Models FD and FDP if a fire-rated unit is required.