

AW-APS

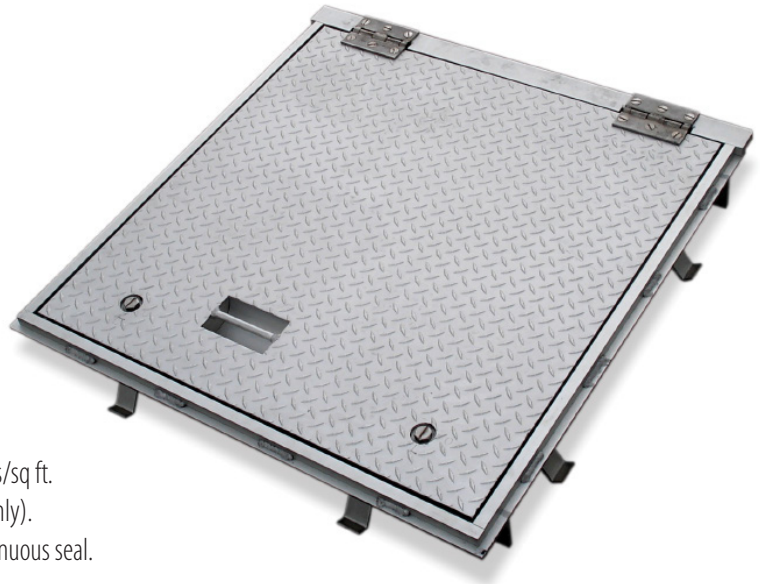
FLOOR DOOR, *Flood/Gas/Odor Resistant*

Application

- Designed for interior and exterior applications where flood, gas, or odor resistance is required.

Product Features

- Angle frame construction with anchors welded around the frame for casting into concrete.
- Diamond plate door panel is reinforced for a live load of 1560 pounds/sq ft. Capable of holding up to 25 ft. head of water (Downward pressure only).
- Door panel overlaps frame, compressing the gasket providing a continuous seal. AW-APS is designed for downward water pressure only.
- EPDM gasket and cam locks designed so door will not leak from standing water, and to reduce the amount of gases and odor that can escape from below.



AW-APS Floor Door Specifications:

Material: Aluminum door & frame ; Type 316 Stainless steel hinges & hardware

Door: 1/4" aluminum diamond plate reinforced for live load of

1560 pounds/per sq. ft. Capable of holding up to 25 ft. head of water (Downward pressure only).

Frame: 3/8" aluminum with 3/16" x 1 1/2" strap anchors welded around the frame for casting into concrete

Hinge: Type 316 stainless steel butt hinges with tamper proof stainless steel bolts and nuts

Gasket: 9/16" O.D. x 1/8" I.D. EPDM gasket

Opening Device: Automatic hold open arm with red vinyl grip allows door to open to 90 degrees, locking door in open position and allowing for easy control when closing door panel. Optional Lift Assist available.

Standard Latch: Type 316 stainless steel watertight cam locks and flush watertight handle.

Finish: Mill finish is standard, Bituminous coating optional on exterior of frame.

This design has been hydrostatically tested to hold up to 25 ft. of water for a period of 10 minutes. (Downward pressure only)
A copy of the test report is available upon request.

AW-APS AVAILABLE SIZES

(Special sizes available upon request)

FRAME I.D. Size W&H		Weight per Door	
inches	mm	lbs.	kg.
24 x 24	610 x 610	84	38
24 x 30	610 x 762	101	46
24 x 36	610 x 914	117	53
30 x 30	762 x 762	125	57
30 x 36	762 x 914	136	62
30 x 48	762 x 1219	176	80
36 x 36	914 x 914	156	71
36 x 48	914 x 1219	201	91

For detailed specifications see submittal sheet

